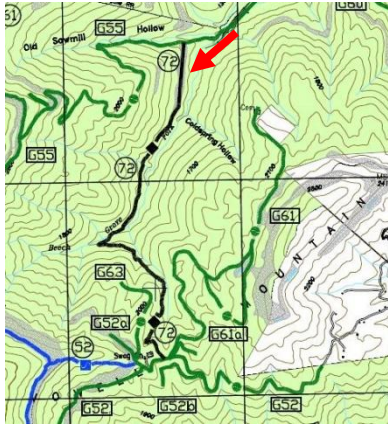


Coal Creek OHV Area Trail of the Month February 2012 Trail 72



Difficulty Level: Difficult
Vehicles: Open to all OHV's
Location: Beech Grove

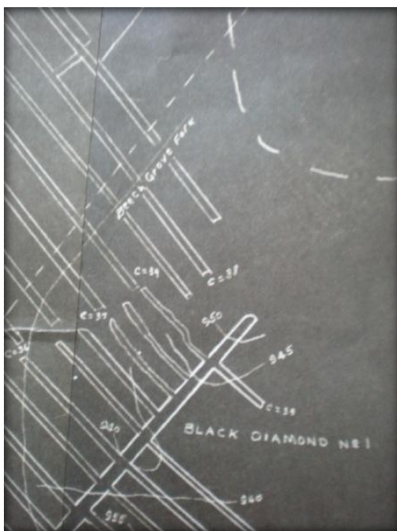


Directions: From the Windrock parking lot, follow Trail 2 to Trail 16 on the right. Follow Trail 16 to G1. Turn right on G1 and follow to Hwy 116. Use caution on G1 due to heavy traffic. Go across Hwy 116 onto G50. Take 1st left to go to top of mountain, turn left onto G50 again, then take next left to go to Trail 50. Stay straight on Trail 50, crossing over G53 onto Trail 53. Follow Trail 53 to Trail 52, on the right. Once on the gravel, go straight (East) on G52 to Trail 72 on the left, just beyond Swag Church.



Features: Trail 72 is a new trail located on the north side of the property and is approximately 2.2 miles long. The trail offers a nice ride through the forest and along the rolling waters of Beech Grove Fork. The beginning of the trail has a fairly

intense hill and can be intimidating, especially if you decide to come up from G55! Most of the trail is moderate, but is rated difficult due to the hill-climb. The trail has some very scenic creek crossings, especially after heavy rains!



History: As with much of Coal Creek, this area also has a rich mining history. Beech Grove was the headquarters of Black Diamond Coal Company which began mining the area in 1873. During its peak as a mining town, Beech Grove consisted of a commissary, movie theater, barber shop, church, school, hotel/club house, which contained the library, as well as about 100 homes. At its peak, the Black Diamond Coal Company had approximately 350 employees. Black Diamond Coal Company operated the mines until they were sold in 1930, becoming Southern Collieries Coal Company, which continued operating for many more years in Beech Grove. The photo to the left is of the mine map from 1963.

Enjoy February's Trail of the Month!

For additional information please contact:
Windrock Park
555 Windrock Park Lane
Oliver Springs, TN 37840 ♦ (865) 435-1251